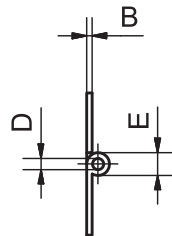
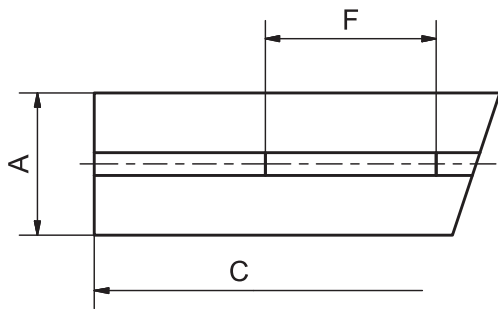


# Standard-Scharniere

Stahl rostfrei / Dorn rostfrei



<b>A</b>	Offene Breite
<b>B</b>	Materialdicke
<b>C</b>	Scharnierlänge
<b>D</b>	Dorndurchmesser
<b>E</b>	Rollenaussendurchmesser
<b>F</b>	Rollenteilung

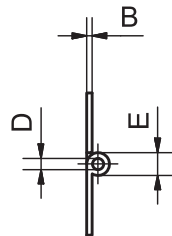
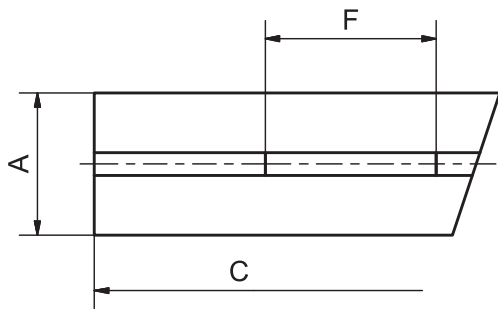
Stahl rostfrei 1.4301 / Dorn rostfrei

Abmessungen (mm)

TYP	Artikel # Glutz	A	B	C	D	E	F
MHS-150-8	242430	25	1	2040	2	4	30
MHS-151-8	242273	32	1	2040	2	4	30
MHS-152-8	242227	40	1	2040	2	4	30
MHS-155-8	242855	32	1.5	2040	4	7	30
MHS-156-8	242111	40	1.5	2040	4	7	30
MHS-157-8	244571	45	1.5	2040	4	7	30
MHS-158-8	242115	50	1.5	2040	4	7	30
MHS-162-8	242643	40	2	2000	5	9	50
MHS-159-8	242692	50	2	2000	5	9	50
MHS-160-8	244685	60	2	2000	5	9	50
MHS-161-8	242328	80	2	2000	5	9	50

# Standard-Scharniere

Stahl blank / Dorn messing



<b>A</b>	Offene Breite
<b>B</b>	Materialdicke
<b>C</b>	Scharnierlänge
<b>D</b>	Dorndurchmesser
<b>E</b>	Rollenaussendurchmesser
<b>F</b>	Rollenteilung

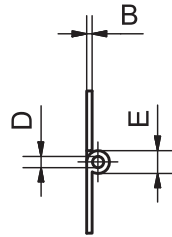
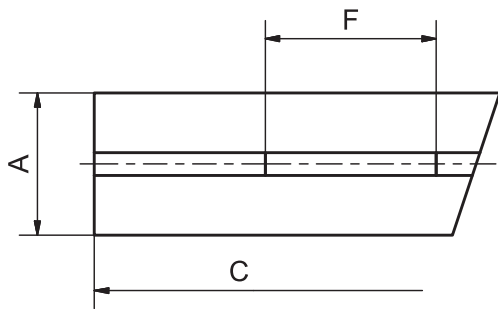
Stahl blank / Dorn messing

Abmessungen (mm)

TYP	Artikel # Glutz	A	B	C	D	E	F
MHS-170-5	244572	25	1	2040	2	4	30
MHS-171-5	242650	32	1	2040	2	4	30
MHS-172-5	242780	40	1	2040	2	4	30
MHS-175-5	242320	32	1.5	2040	4	7	30
MHS-176-5	242782	40	1.5	2040	4	7	30
MHS-177-5	244573	45	1.5	2040	4	7	30
MHS-178-5	244466	50	1.5	2040	4	7	30
MHS-179-5	244686	40	2	2000	5	9	50
MHS-180-5	242272	50	2	2000	5	9	50
MHS-181-5	243137	60	2	2000	5	9	50
MHS-182-5	242157	80	2	2000	5	9	50

## Standard-Scharniere

Peraluman / Dorn peraluman



<b>A</b>	Offene Breite
<b>B</b>	Materialdicke
<b>C</b>	Scharnierlänge
<b>D</b>	Dorndurchmesser
<b>E</b>	Rollenaussendurchmesser
<b>F</b>	Rollenteilung

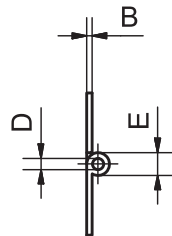
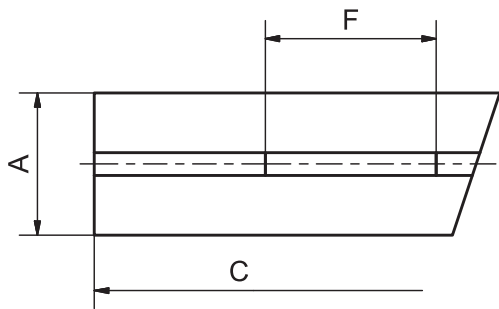
### Peraluman / Dorn peraluman

Abmessungen (mm)

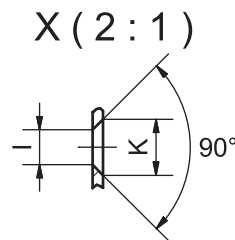
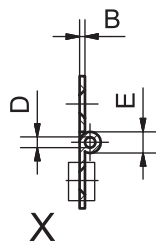
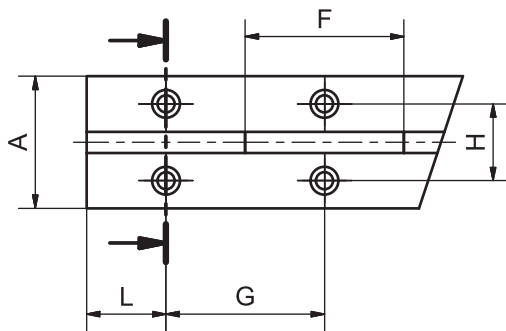
TYP	Artikel # Glutz	A	B	C	D	E	F
MHS-191-9	243239	32	1	2040	2	4	30
MHS-192-9	242819	40	1	2040	2	4	30
MHS-193-9	244579	32	1.5	2040	4	7	30
MHS-194-9	242220	40	1.5	2040	4	7	30

# Konfektionierte Standard-Scharniere

Stahl rostfrei / Dorn rostfrei



- A** Offene Breite
- B** Materialdicke
- C** Scharnierlänge
- D** Dorndurchmesser
- E** Rollenaussendurchmesser
- F** Rollenteilung
- G** Lochteilung
- H** Lochabstand
- I** Lochdurchmesser
- K** Senkungsdurchmesser
- L** Locheinzug



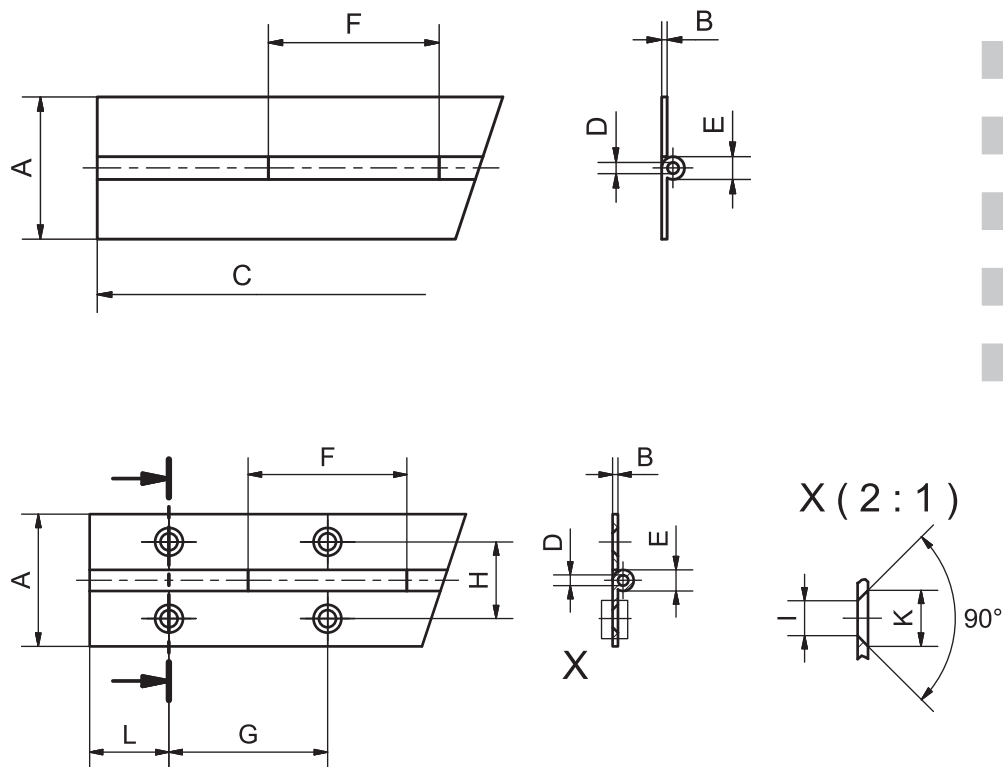
Stahl rostfrei 1.4301 / Dorn rostfrei

Abmessungen (mm) / Konfektion nach Wunsch

TYP	A	B	C	D	E	F	G	H	I	K	L
MHS-150-8	25	1	2040	2	4	30					
MHS-151-8	32	1	2040	2	4	30					
MHS-152-8	40	1	2040	2	4	30					
MHS-155-8	32	1.5	2040	4	7	30					
MHS-156-8	40	1.5	2040	4	7	30					
MHS-157-8	45	1.5	2040	4	7	30					
MHS-158-8	50	1.5	2040	4	7	30					
MHS-162-8	40	2	2000	5	9	50					
MHS-159-8	50	2	2000	5	9	50					
MHS-160-8	60	2	2000	5	9	50					
MHS-161-8	80	2	2000	5	9	50					

# Konfektionierte Standard-Scharniere

Stahl blank / Dorn messing



- A** Offene Breite
- B** Materialdicke
- C** Scharnierlänge
- D** Dorndurchmesser
- E** Rollenaussendurchmesser
- F** Rollenteilung
- G** Lochteilung
- H** Lochabstand
- I** Lochdurchmesser
- K** Senkungsdurchmesser
- L** Locheinzug

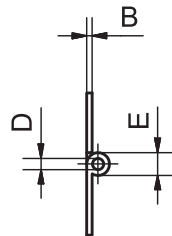
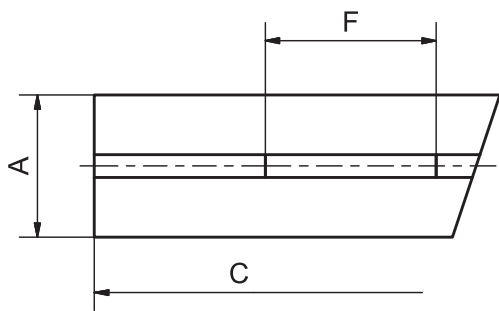
Stahl blank / Dorn messing

Abmessungen (mm) / Konfektion nach Wunsch

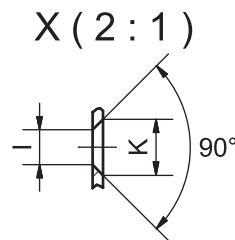
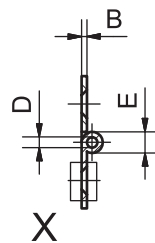
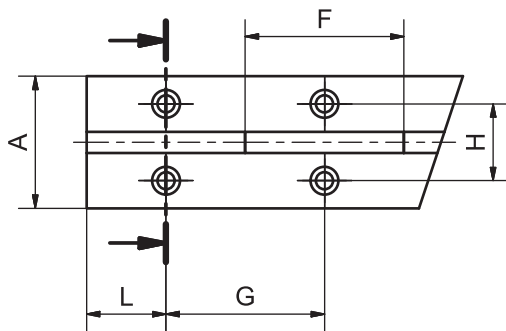
TYP	A	B	C	D	E	F	G	H	I	K	L
MHS-170-5	25	1	2040	2	4	30					
MHS-171-5	32	1	2040	2	4	30					
MHS-172-5	40	1	2040	2	4	30					
MHS-175-5	32	1.5	2040	4	7	30					
MHS-176-5	40	1.5	2040	4	7	30					
MHS-177-5	45	1.5	2040	4	7	30					
MHS-178-5	50	1.5	2040	4	7	30					
MHS-179-5	40	2	2000	5	9	50					
MHS-180-5	50	2	2000	5	9	50					
MHS-181-5	60	2	2000	5	9	50					
MHS-182-5	80	2	2000	5	9	50					

# Konfektionierte Standard-Scharniere

Peraluman / Dorn peraluman



- A** Offene Breite
- B** Materialdicke
- C** Scharnierlänge
- D** Dorndurchmesser
- E** Rollenaussendurchmesser
- F** Rollenteilung
- G** Lochteilung
- H** Lochabstand
- I** Lochdurchmesser
- K** Senkungsdurchmesser
- L** Locheinzug



## Peraluman / Dorn peraluman

Abmessungen (mm) / Konfektion nach Wunsch

TYP	A	B	C	D	E	F	G	H	I	K	L
MHS-191-9	32	1	2040	2	4	30					
MHS-192-9	40	1	2040	2	4	30					
MHS-193-9	32	1.5	2040	4	7	30					
MHS-194-9	40	1.5	2040	4	7	30					